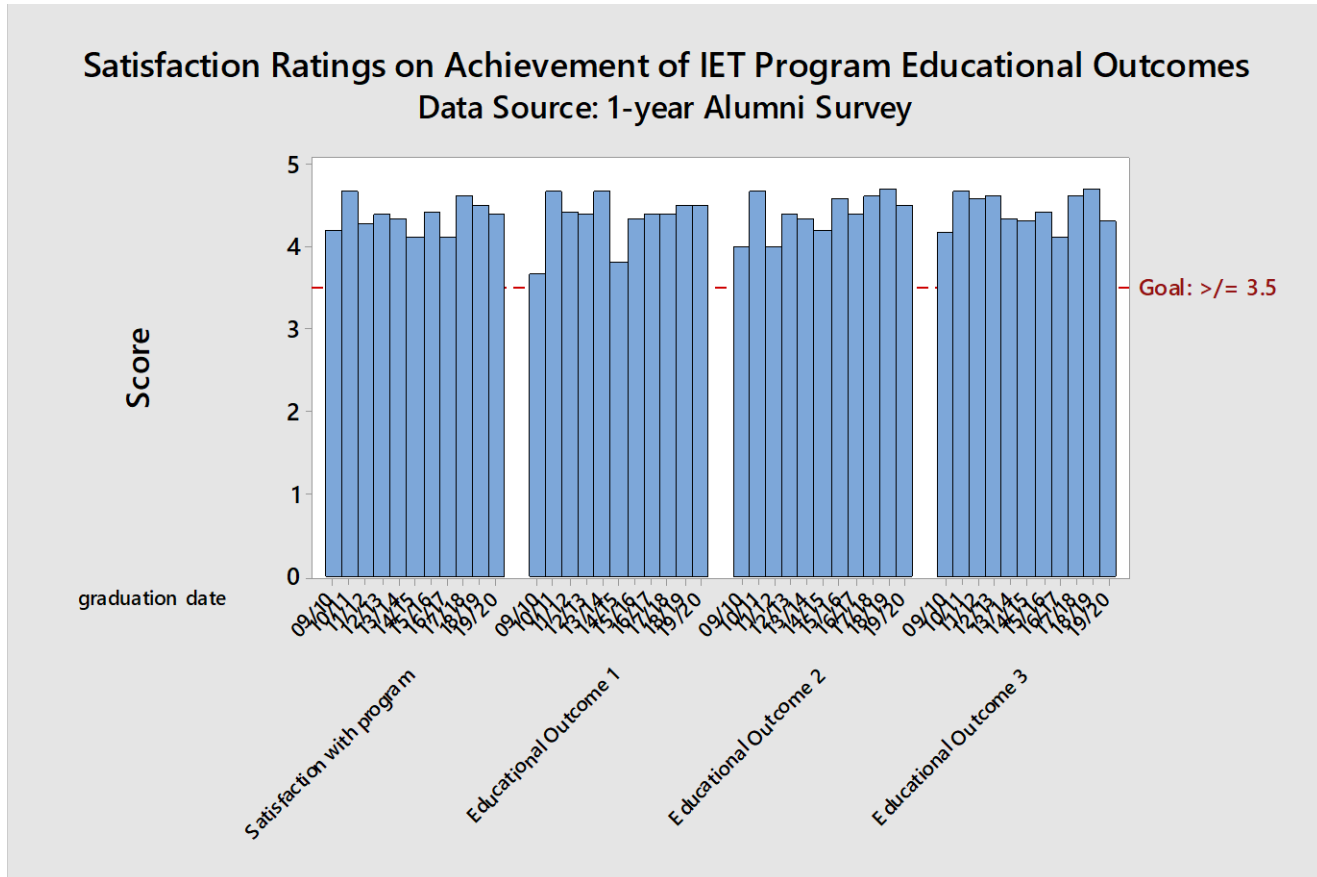


## Key Performance Indicators:

### 1. Alumni Survey Results

Alumni are surveyed about 4-6 months after graduation regarding job placement. Results for the past eleven years are shown in the figure below. The data shows that the Industrial Engineering Technology alumni are satisfied with the program and feel like they were well prepared for the job market. Furthermore, the alumni feel they have acquired mastery of the three program educational outcomes.



**The program educational outcomes are broad statements that describe what Industrial Engineering Technology graduates are expected to accomplish within a few years of graduation.**

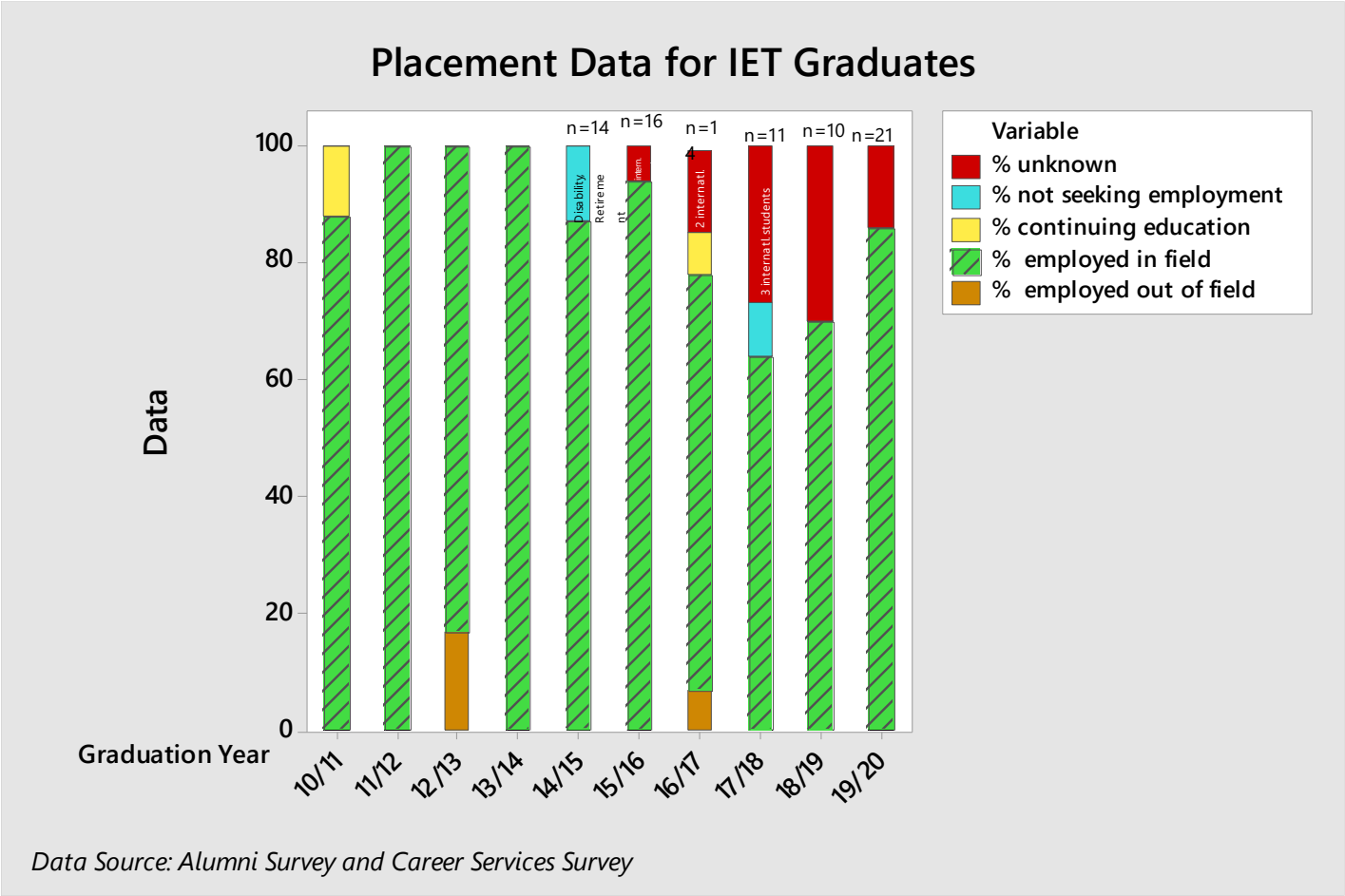
The Engineering Technology department at Missouri Southern will produce graduates who

1. have the technical and managerial skills necessary to develop, implement, and improve integrated systems that include people, materials, information, equipment, and energy.
2. function effectively on teams.
3. communicate effectively with professionals and lay audiences.

Key Performance Indicators:

2. Placement Data for IET Graduates

Alumni are surveyed about 4-6 months after graduation regarding job placement. Results for the past ten years regarding placement rates are shown in the figure below.

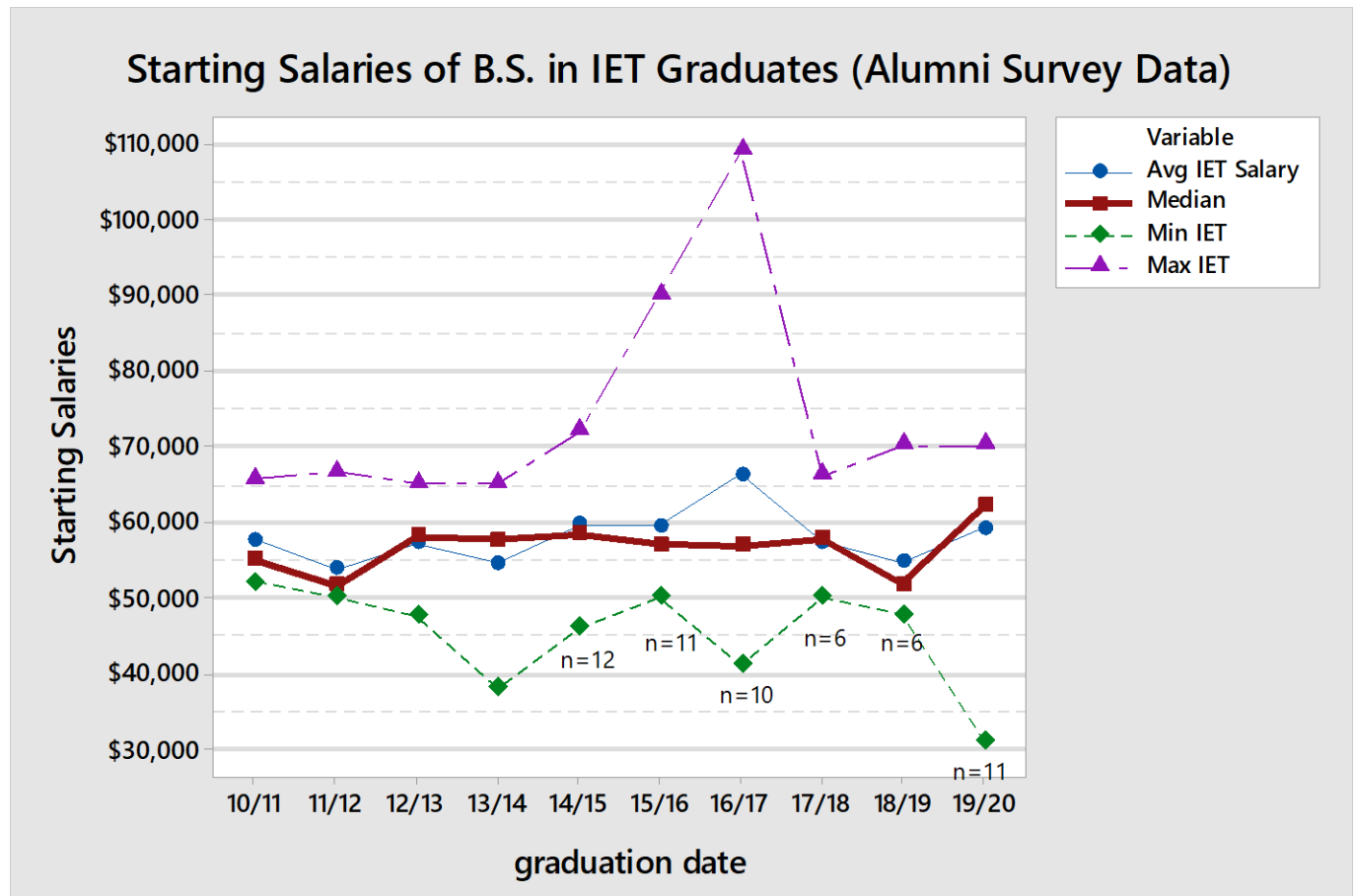


## Key Performance Indicators:

### 3. Salary Data

Alumni are surveyed about 4-6 months after graduation regarding job placement. Results for the past ten years regarding salaries are shown in the figure below.

The data show that the median salary for 19/20 graduates was \$62,000 (11 graduates participated in the survey).



Key Performance Indicators:

#### 4. Enrollment Data

Student numbers for Industrial Engineering Technology majors are shown in the table below.

